

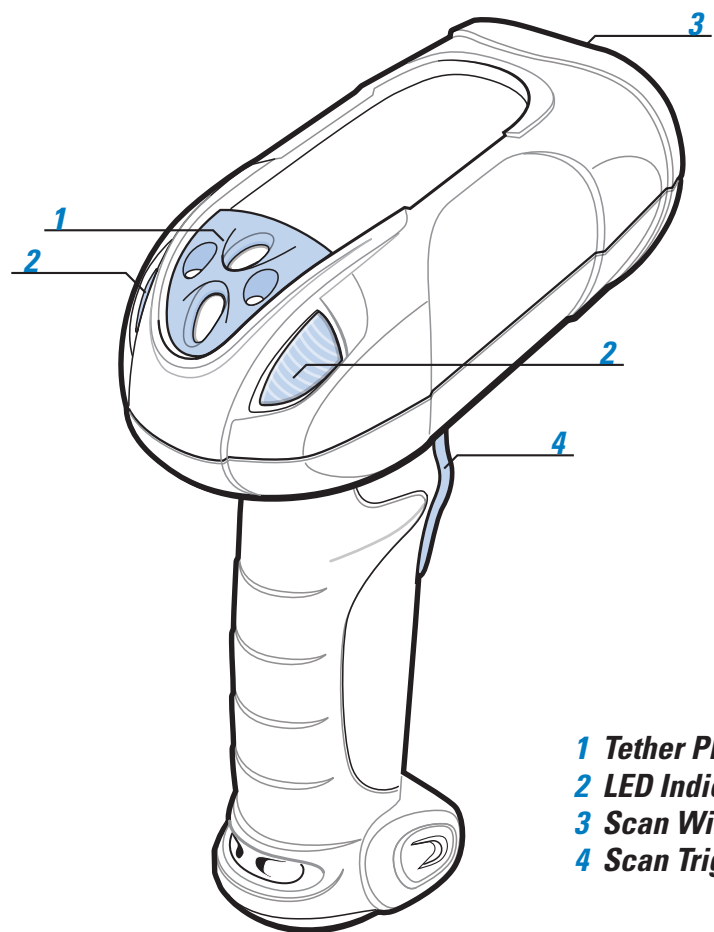
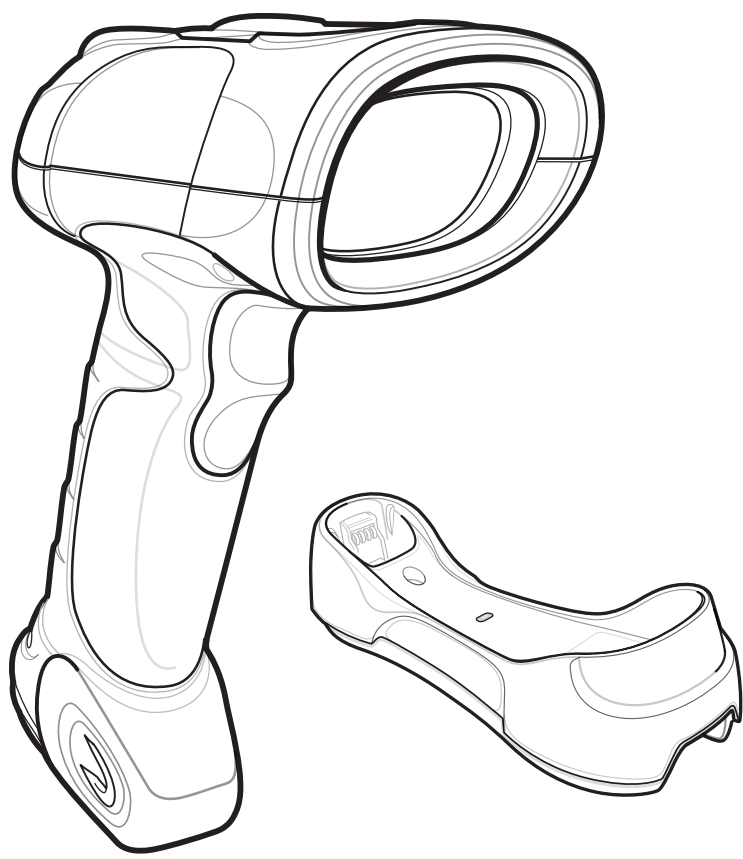
SYMBOL LS3578

Quick Start Guide

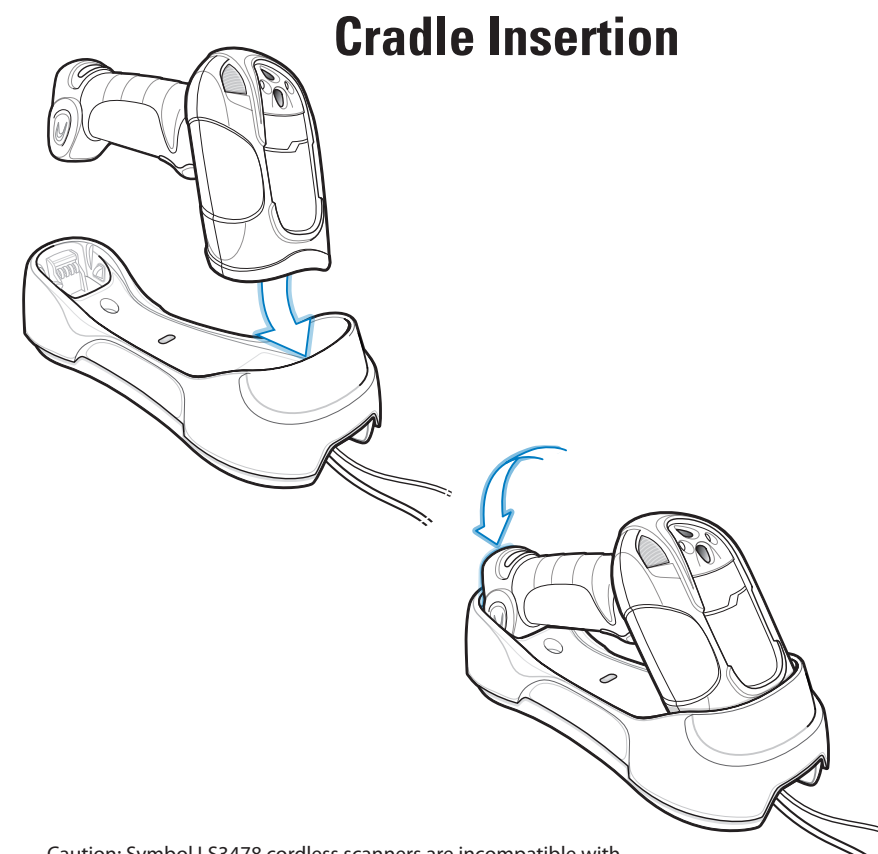


<http://www.symbol.com/ls3578> See Product Reference Guide for more information

POST IN WORK AREA



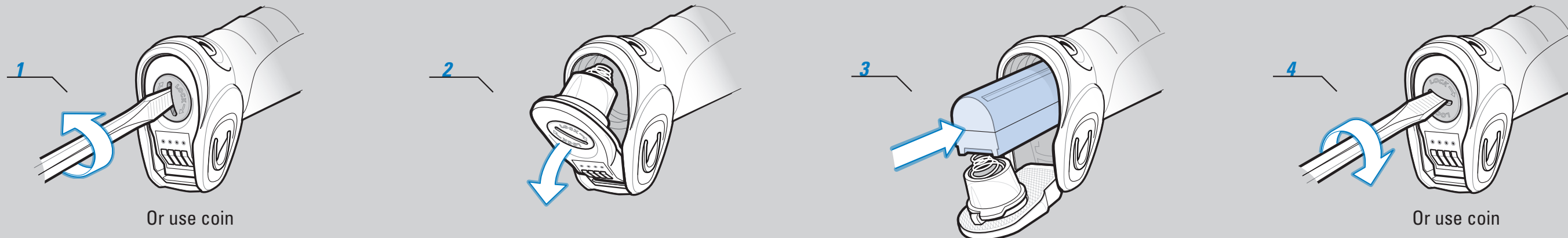
- 1 Tether Plate
- 2 LED Indicators
- 3 Scan Window
- 4 Scan Trigger



Cradle Insertion

Caution: Symbol LS3478 cordless scanners are incompatible with Symbol STB3508/3578 cradles. Symbol LS3578 cordless scanners are incompatible with Symbol STB3408/3478 cradles.

BATTERY INSERTION/REMOVAL



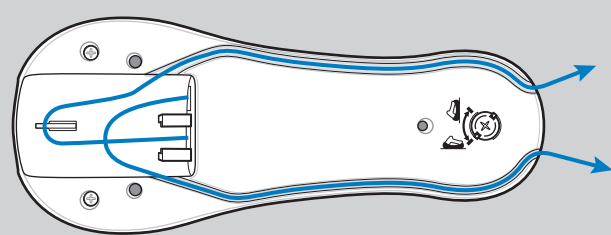
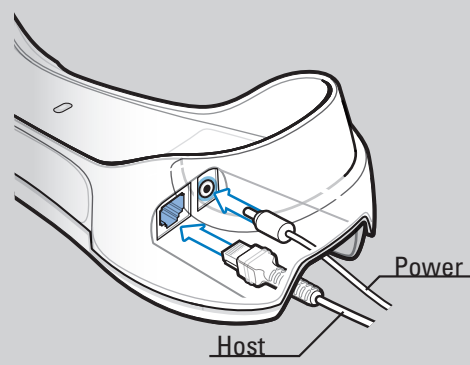
Or use coin

Or use coin

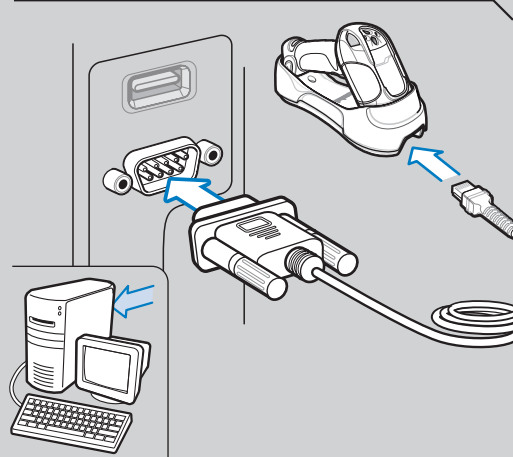
HOST INTERFACES

NOTE: Cables may vary depending on configuration. When using an external power supply, insert the cable into the cradle first, then insert host cable. Connect power last.

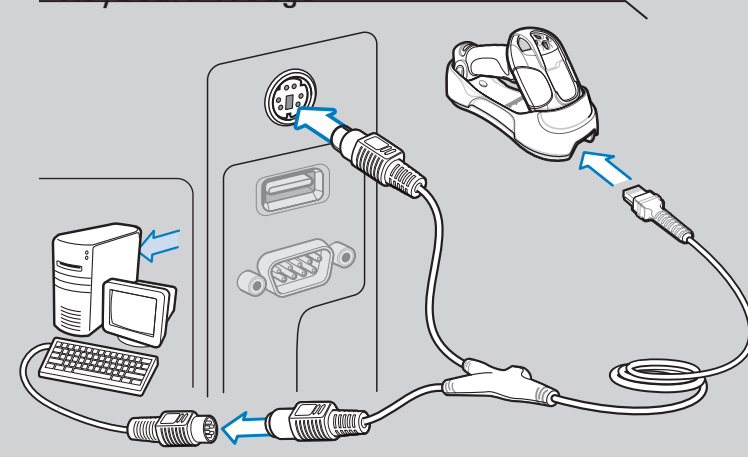
Cable Connection at Cradle



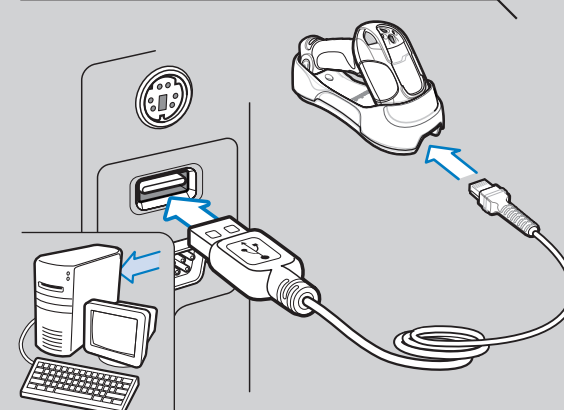
RS-232



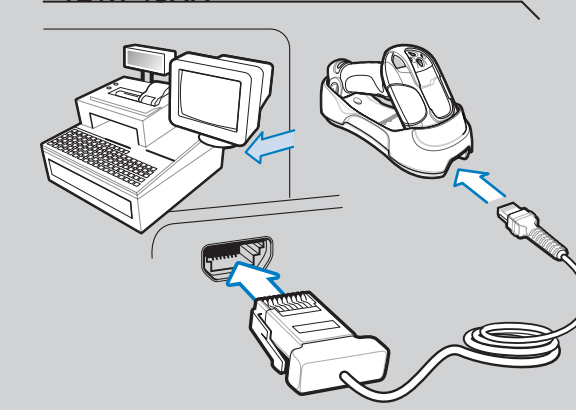
Keyboard Wedge



USB



IBM 46XX



TROUBLESHOOTING

Please refer to the Symbol LS3578 Product Reference Guide Troubleshooting section for further information.

Scanner not working

- No power to scanner
Check battery
- End cap not secured correctly
Turn end cap to secure

Scanner not decoding bar code

- Scanner not programmed for bar code type
Ensure scanner is programmed to read type of bar code being scanned
- Bar code unreadable
Ensure bar code is not defaced; try scanning test bar code of same bar code type

Scanner decoding bar code, but data not transmitting to host

- Scanner not paired to host-connected cradle
Pair the scanner to the cradle (using the PAIR bar code on the cradle)
- Cradle not programmed for correct host interface
Check scanner host parameters or edit options
- Interface cable is loose
Check for loose cable connections

If data is still not transmitting to host, it may be necessary to recycle power on the cradle.

Scanned data incorrectly displayed on host

- Paired cradle host communication parameters do not match the host's parameters
Check cradle host parameters or edit options

SYMBOL LS3578 PROGRAMMING BAR CODES

Set Defaults

Note: The scanner connection to the cradle is dissolved when Set Defaults is scanned.



SET DEFAULTS

Unpairing/Disconnection



UNPAIR/DISCONNECT

USB Host Types



HID KEYBOARD EMULATION



IBM HAND-HELD USB

IBM 46XX Host Types



PORT 5B



PORT 9B

Keyboard Wedge Host Types



IBM PC/AT and IBM PC COMPATIBLE

Carriage Return/Line Feed



SCAN OPTIONS



<DATA><SUFFIX>



ENTER

Radio Communications Host Types



CRADLE HOST



SERIAL PORT PROFILE (SLAVE)



HID PROFILE (SLAVE)



SERIAL PORT PROFILE (MASTER)



HID PROFILE (MASTER)

RS-232 Host Types



STANDARD RS-232



NIXDORF RS-232 MODE B



NIXDORF RS-232 MODE A



ICL RS-232



FUJITSU RS-232

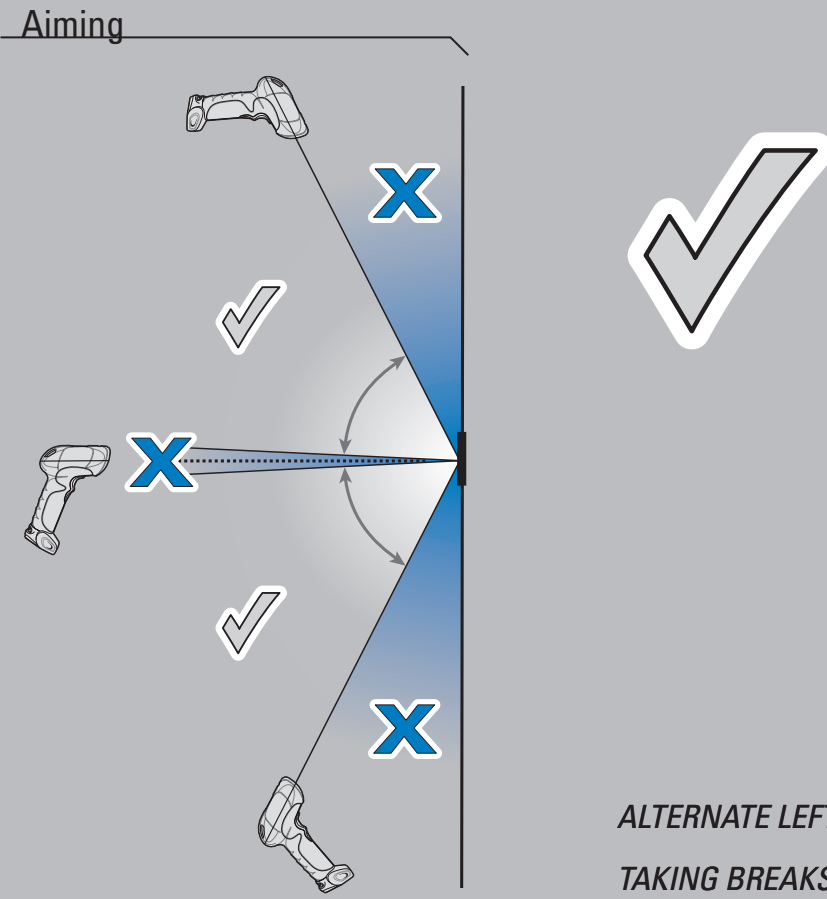
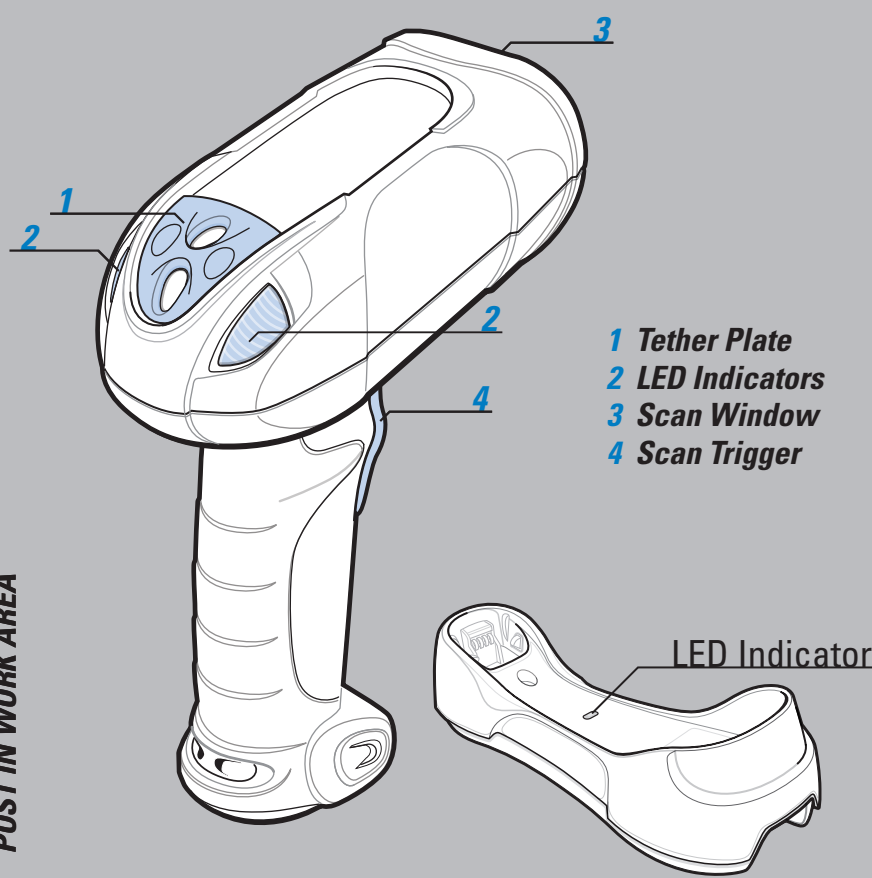


OPOS/JPOS

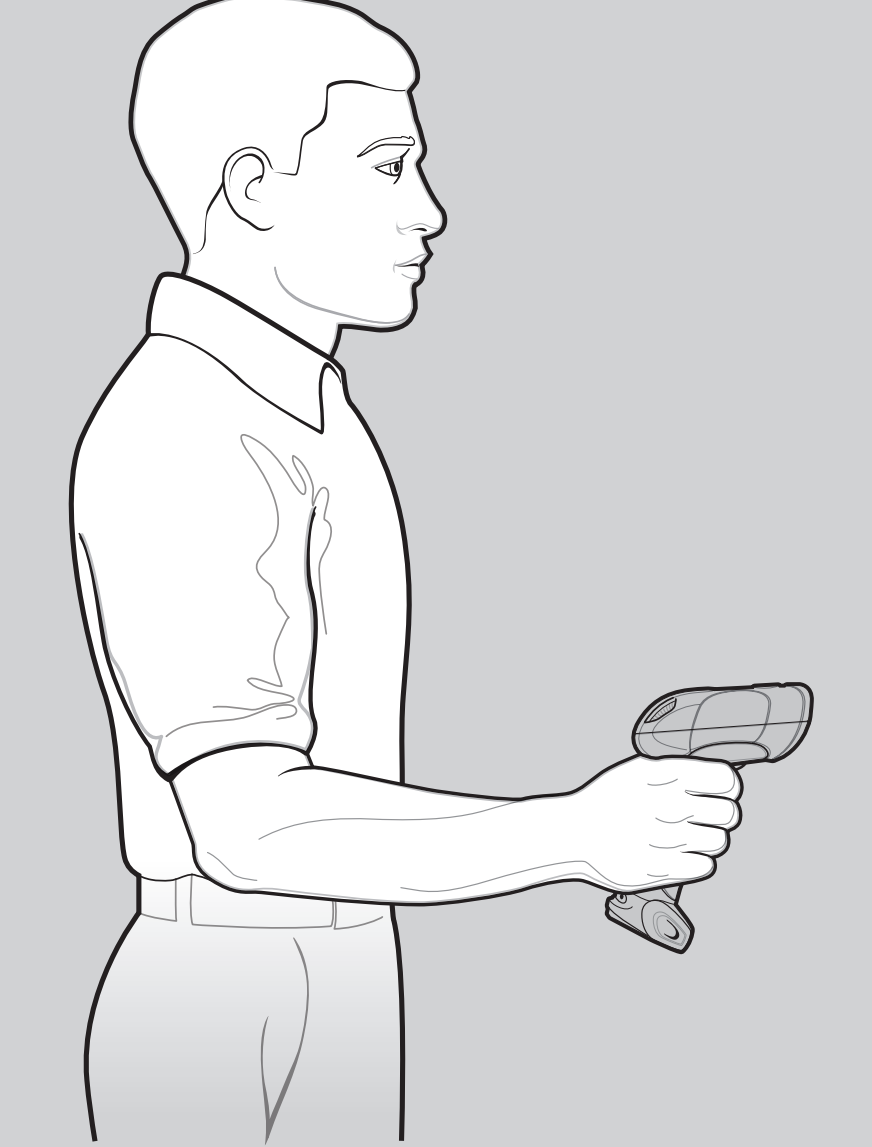
SYMBOL LS3578

Quick Start Guide

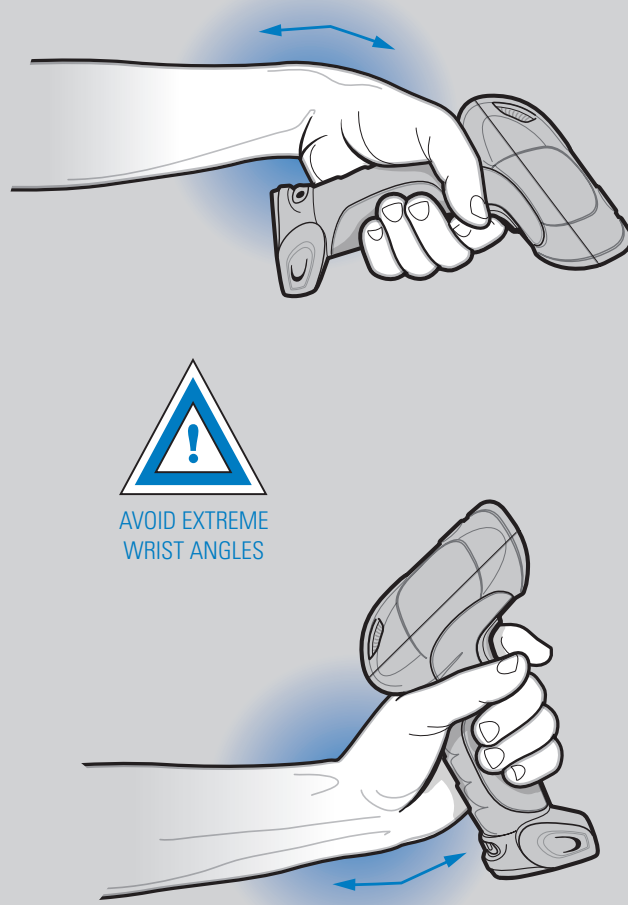
OPTIMUM SCANNING POSITIONS



OPTIMUM UPRIGHT BODY POSTURE



Avoid Extreme Wrist Angles



Beeper Indications

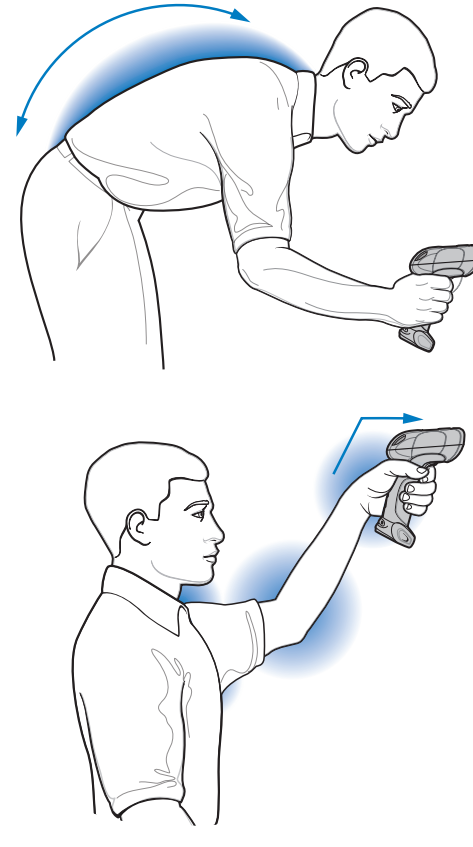
Standard Use	Low-medium-high beeps	Normal beep	4 long low beeps	4 short high beeps
	Power up	Bar code decoded (if decode beeper enabled)	Transmission error detected; data is ignored	Low battery indication
Parameter Menu Scanning	High-low-high-low beeps	Short low-high beeps	Short high-low beeps	Long low-high beeps or Long low-high-low-high beeps
	Successful program exit with change in the parameter setting	Scanner has paired with the cradle	Scanner has unpaired with the cradle	Unsuccessful pairing attempt

LED Indications

Standard Use	Off	Green	Red	
	No power applied to scanner (battery discharged or removed), or scanner is in low power and ready to scan	Bar code successfully decoded	Data transmission error or scanner malfunction or Symbol LS3578 scanner inserted into an STB3478 cradle	
Charging Use	Green Slow Flash	Green Fast Flash	Red Flash	Red and Green Flash
	Scanner charging at a slow rate (used when cradle is powered by host cable)	Scanner charging at a fast rate (used when cradles powered from external power supply)	Charging problem. See Product Reference Guide for more information	Temperature fault

OPTIMUM BODY POSTURE

Optimum body posture for low scanning



Optimum body posture for extended range scanning



SYMBOL LS3578

Recommended Usage Guide

REGULATORY INFORMATION

© MOTOROLA, INC. 2007 All rights reserved.

Motorola reserves the right to make changes to any product to improve reliability, function, or design.

Motorola does not assume any product liability arising out of, or in connection with, the application or use of any product, circuit, or application described herein.

No license is granted, either expressly or by implication, estoppel, or otherwise under any patent right or patent, covering or relating to any combination, system, apparatus, machine, material, method, or process in which Motorola products might be used. An implied license exists only for equipment, circuits, and subsystems contained in Motorola products.

MOTOROLA, the Stylized M Logo and Symbol are registered trademarks of Motorola, Inc. Other product names mentioned in this manual may be trademarks or registered trademarks of their respective companies and are hereby acknowledged.

Motorola, Inc.
One Motorola Plaza
Holtsville, N.Y. 11742-1300
http://www.symbol.com

Warranty
For the complete Motorola hardware product warranty statement, go to: <http://www.symbol.com/warranty>.

Patents
This product is covered by one or more patents. For patent information go to: <http://www.symbol.com/patents>.

Ergonomic Recommendations
Caution: In order to avoid or minimize the potential risk of ergonomic injury follow the recommendations below. Consult with your local Health & Safety Manager to ensure that you are adhering to your company's safety programs to prevent employee injury.

- Reduce or eliminate repetitive motion
- Maintain a natural/neutral position
- Reduce or eliminate excessive force
- Keep objects that are used frequently within easy reach
- Perform tasks at correct heights
- Reduce or eliminate vibration
- Reduce or eliminate direct pressure
- Provide adjustable workstations
- Provide a suitable working environment
- Improve work procedures

Service Information
If you have a problem using the equipment, contact your facility's Technical or Systems Support. If there is a problem with the equipment, they will contact the Motorola Enterprise Mobility Support. <http://www.symbol.com/contactsupport>.

For the latest version of this guide go to: <http://www.symbol.com/manuals>.

Waste Electrical and Electronic Equipment (WEEE)

English: For EU Customers: All products at the end of their life must be returned to Motorola for recycling. For information on how to return product, please go to: http://www.symbol.com/environmental_compliance.

Spanish: Si el cliente es de la Unión Europea, todos los productos deben ser devueltos a Motorola al final de su vida útil para su reciclado. Si desea más información sobre cómo devolver el producto, visite: http://www.symbol.com/environmental_compliance.

French: Clients de l'Union Européenne - Tous les produits en fin de cycle de vie doivent être retournés à Motorola pour recyclage. Pour de plus amples informations sur le retour de produits, consultez: http://www.symbol.com/environmental_compliance.

Italian: Per i clienti dell'UE tutti i prodotti che sono giunti al termine del rispettivo ciclo di vita devono essere restituiti a Motorola al fine di consentire il riciclaggio. Per informazioni sulle modalità di restituzione, visitate il seguente sito Web: http://www.symbol.com/environmental_compliance.

German: Für Kunden innerhalb der EU: Alle Produkte müssen am Ende ihrer Lebensdauer zum Recycling an Motorola zurückgeschickt werden. Informationen zur Rücksendung von Produkten finden Sie unter: http://www.symbol.com/environmental_compliance.

Dutch: De klanten van de EU: Alle producten moeten aan het einde van hun levensduur naar Motorola worden teruggezonden voor recycling. Raadpleeg http://www.symbol.com/environmental_compliance voor meer informatie over het terugsturen van producten.

Polish: Klienci z obszaru UE: Europejskie Produkty powinny być zwrócone do recyklingu po zakończeniu ich użytkowania. Aby uzyskać więcej informacji, odwiedź stronę: http://www.symbol.com/environmental_compliance.

Portuguese: Para clientes da UE: todos os produtos no fim da vida devem ser devolvidos à Motorola para reciclagem. Para obter informações sobre como devolver o produto, visite: http://www.symbol.com/environmental_compliance.

Swedish: För kunder inom EU: Alla produkter ska skickas tillbaka till Motorola för återvinning. För mer information om hur man skickar tillbaka produkter, gå till: http://www.symbol.com/environmental_compliance.

Country Approval
Regulatory markings are applied to the device signifying the radio (s) are approved for use in the following countries: United States, Canada, Australia, Japan & Europe 1.

Please refer to the Symbol Declaration of Conformity (DoC) for details of other country markings. This is available at <http://www2.symbol.com/doc/>.

Note1: For 2.4GHz Products: Europe includes, Austria, Belgium, Bulgaria, Czech Republic, Croatia, Cyprus, Denmark, Estonia, Finland, France, Germany, Greece, Hungary, Iceland, Ireland, Italy, Latvia, Liechtenstein, Lithuania, Luxembourg, Malta, Netherlands, Norway, Poland, Portugal, Romania, Slovak Republic, Slovenia, Spain, Sweden, Switzerland and the United Kingdom.

Radio Modules
The Symbol LS3578 Scanners contain an approved radio module. This module is the Symbol Bluetooth radio Type: LMX5452

Bluetooth Devices
This product is an approved Bluetooth device. BT ID: B02793
Operation of the device without regulatory approval is illegal

Power Supply
Use only an approved power supply 50-14000-239R output rated 9 VDC and minimum 2 A. The power supply is certified to EN60950 with SELV outputs. Use of alternative power supply will invalidate any approval given to this device and may be dangerous.

FCC / EU RF Exposure Guidelines
The device complies with internationally recognized standards covering Specific Absorption Rate (SAR) related to human exposure to electromagnetic fields from radio devices.

Reducing RF Exposure – Use Properly
It is advisable to use the device only in the normal operating position.

Hand Held Devices:
To comply with FCC RF exposure requirements, this device must be operated in the hand. Other operating configurations should be avoided.

Radio Frequency Interference Requirements

Radio Transmitters (Part 15)
This device complies with Part 15 of the FCC Rules. Operation is subject to the following two conditions:
(1) This device may not cause harmful interference, and
(2) this device must accept any interference received, including interference that may cause undesired operation.

Radio Frequency Interference Requirements – Canada
Radio Transmitters
This device complies with RSS 210 of Industry & Science Canada. Operation is subject to the following two conditions: (1) this device may not cause harmful interference and (2) this device must accept any interference received, including interference that may cause undesired operation.

Label Marking: The Term "IC" before the radio certification only signifies that Industry Canada technical specifications were met.

Radio Frequency Interference Requirements – Brazil
Declarações Regulamentares para Symbol LS3578 BRAZIL
NOTA: A marca de certificação se aplica ao Equip. de Radiação Restrita, modelo Symbol LS3578. Este equipamento opera em caráter secundário, isto é, não tem direito a proteção contra interferência prejudicial, mesmo de estações do mesmo tipo, e não pode causar interferência a sistemas operando em caráter primário.

Para maiores consultas sobre ANATEL consulte o site: www.anatel.gov.br

Laser Labels

In accordance with Clause 5, IEC 825 and EN60825, the following information is provided to the user:

ENGLISH	CLASS 1 LASER PRODUCT	CLASS 2 LASER PRODUCT	HEBREW	מכשיר לייזר דרגה 1	מכשיר לייזר דרגה 2
	CLASS 1 LASER PRODUCT	LASER LIGHT DO NOT STARE INTO BEAM CLASS 2 LASER PRODUCT	מכשיר לייזר דרגה 1	מכשיר לייזר דרגה 2	מכשיר לייזר דרגה 2
DANISH / DANSK	KLASSE 1 LASERPRODUKT	LASERLYS SE IKKE IND I STRÅLEN	ITALIAN / ITALIANO	PRODOTTO AL LASER DI CLASSE 1	LUCE LASER NON FISSARE IL RAGGIO/PRODOTTO AL LASER DI CLASSE 2
DUTCH / NEDERLANDS	KLASSE 1 LASERPRODUKT	LASERLICHT NIET IN STRAAL STAREN	NORWEGIAN / NORSK	LASERPRODUKT, KLASSE 1	LASERLYS IKKE STIRR INN LYSSTRÅLEN
FINNISH / SUOMI	LUOKKA 1 LASERTUOTE	LUOKKA 2 LASERVALO ÄLÄ TUJUTTA SÄDETTÄ	PORTUGUESE / PORTUGUÊS	PRODUTO LASER DA CLASSE 1	LUZ DE LASER NÃO FIXAR O RAIO LUMINOSO
FRENCH / FRANÇAIS	PRODUIT LASER DE CLASSE 1	LUMIERE LASER NE PAS REGARDER LE RAYON FxEMENT	SPANISH / ESPAÑOL	PRODUCTO LASER DE LA CLASE 1	LUZ LASER NO MIRE FJAJAMENTE EL HAZ
GERMAN / DEUTSCH	LASERSTRALHEN NICHT DIREKT IN DEN LASERSTRAHL SCHAUEN	LASERPRODUKT DER KLASSE 2	SWEDISH / SVENSKA	LASERPRODUKT KLAS 1	LASERLJUS STRÅLA INTE MOT STRÅLEN
JAPANESE / 日本語	第1種 レーザー製品	第2種 レーザー製品	CHINESE / 简体中文	1类激光产品	2类激光产品
	第1種 レーザー製品	第2種 レーザー製品	KOREAN / 한국어	1등급 레이저 제품	2등급 레이저 제품

Laser Devices
Symbol products using lasers comply with US 21CFR1040.10, and IEC825-1:1993, EN60825-1:1994-A11:1996. The laser classification is marked on one of the labels on the device.
Class 1 Laser devices are not considered to be hazardous when used for their intended purpose. The following statement is required to comply with US and international regulations:
Caution: Use of controls, adjustments or performance of procedures other than those specified herein may result in hazardous laser light exposure.
Class 2 laser scanners use a low power, visible light diode. As with any very bright light source, such as the sun, the user should avoid staring directly into the light beam. Momentary exposure to a Class 2 laser is not known to be harmful.

Scanner Labeling

CAUTION: CLASS 2 LASER LIGHT WHEN OPEN, AVOID DIRECT EYE EXPOSURE. LASER LIGHT MAY BE EMISSION OF LASER RADIATION. CLASS 2 LASER PRODUCT. SEE USER MANUAL FOR LASER SAFETY INFORMATION. SEE USER MANUAL FOR LASER SAFETY INFORMATION.

CAUTION: CLASS 2 LASER LIGHT WHEN OPEN, AVOID DIRECT EYE EXPOSURE. LASER LIGHT MAY BE EMISSION OF LASER RADIATION. CLASS 2 LASER PRODUCT. SEE USER MANUAL FOR LASER SAFETY INFORMATION. SEE USER MANUAL FOR LASER SAFETY INFORMATION.

COMPLIES WITH CANADIAN AND U.S. LIST I EXCEPT FOR SYMBOLS PERTAINING TO LASER NOTICE NO. 20, DATED JULY 21, 2004, AND THE CANADIAN LASER SAFETY REGULATIONS, WHICH REQUIRE THE USER TO WEAR LASER SAFETY GLASSES. SEE USER MANUAL FOR LASER SAFETY INFORMATION.

Regulatory Information
Symbol Technologies, Inc., the Enterprise Mobility business of Motorola, Inc. ("Motorola"). All Symbol devices are designed to be compliant with rules and regulations in locations they are sold and will be labeled as required.
Local language translations are available at the following website: <http://support.symbol.com>. Any changes or modifications to Symbol equipment, not expressly approved by Symbol, could void the user's authority to operate the equipment.

Marking and European Economic Area (EEA)
Bluetooth for use through the EEA has the following restrictions
• Maximum radiated transmit power of 10mW EIRP in the frequency range 2.400 - 2.4835 GHz
• Italy requires a user license for outside usage.

Statement of Compliance
Symbol Technologies, Inc., hereby declares that this device is in compliance with the essential requirements and other relevant provisions of Directives 1999/5/EC, 89/336/EEC and 73/23/EEC. Declaration of Conformities may be obtained from <http://www2.symbol.com/doc/>

